



Honeywell Total Connect 2.0 Tracking Services Dashboard

Honeywell Total Connect Tracking Services provide on-demand vehicle/asset location, location history, programmable speed alerts (vehicle alerts), customized notifications based upon entering or exiting a designated area and more. The option to upload an image of the user's vehicle or asset in the account is available.

When vehicles or assets exit the geo-fence area that has been set up, the GPS dashboard images will appear in red. Green shading indicates that the vehicle or asset is within the geo-fence area that has been created. If the dashboard is yellow, this means a geo-fence area has not

been created.

Tracking services may be combined with interactive security, energy management and video services, or as a standalone service offering.

Tracking services are a part of Honeywell Total Connect Remote Services, which let consumers control their security and automation systems, view live video and receive important email and video notifications on mobile devices anytime, anywhere. It provides dealers with an excellent way to earn RMR.

TCVT2

HONEYWELL TOTAL CONNECT VEHICLE TRACKER



FEATURES

- Recommended for passenger cars, light trucks and service vans
- Plug and play Installation – plugs directly into vehicle's OBD port
- Vehicle diagnostics and reporting capabilities
- Compatible with most vehicles built since 1996
- Compact, lightweight, low profile design
- Internal antennas
- Customizable features (GPS location, geo-fencing and events)
- Monitored and reconfigured remotely
- Location history with starts and stops

Note: The TCVT2 uses a certain amount of current from the vehicle's battery even when the vehicle is turned off. Care should be taken in using the device in vehicles that have old or weak batteries or that may go extended periods of time without being started. Smart Power Mode: TCVT2 will lower the current draw by disabling GPS in the event the vehicle battery is lowered to 11.5 volts. Once the vehicle battery voltage exceeds 12.4 volts, GPS will be re-initialized.

Honeywell Total Connect™

TRACKING SERVICES

TCVT2 SPECIFICATIONS

Mechanical

- Dimensions – 1.8" x 1.5" x 1"
- Housing – ABS plastic
- Weight – <2 oz.

Radio Performance

- OBD Connector – J1962
- GPS Antenna – Integrated
- Cellular Antenna – Integrated dual-band (850-1900 MHz)

Cellular Specification

CDMA 1XRTT Characteristics

- Dual-band support
 - 800 MHz
 - 1900 MHz
- Protocol – Supports TCP and UDP
- PS (Packet Switched) data rate – CDMA PS data up to 153 kb/s DL/UL

On-board Diagnostics (Obd-II)

- J1850 PWM
- J1850 VPW
- ISO-9141-2
- ISO-14230 KWP2000
- ISO-15765 CAN

GPS Specification

- Receiver – 50 channel
- Receiver Sensitivity – -161 dBm
- Accuracy – +/- 2.5m CEP
- Cold Start – <33 seconds
- Hot Start – <1 second

Environment

- Operating temperature – -22°F to 167°F (-30°C to 75°C)

Power

- DC Power – 6-18V
- GSM 850 – 35mA average @ 12V
- GSM 1900 – 30mA average @ 12V

Certifications

- FCC – Parts 15, 22 and 24
- Verizon Network

TCAT

HONEYWELL TOTAL CONNECT™ ASSET TRACKER

FEATURES

- Recommended for constant powered applications – designed for heavy machinery and equipment, jet skis, snow mobiles, boats, ATVs, trailers and RVs, and motorcycles
- CDMA 1XRTT
- 1XRTT supports 800/1900 MHz dual band
- LED status indicators for GPS, network registration
- Over-the-air configuration and firmware upgrade
- Supports TCP and UDP
- Integrated GPS receiver and antenna for tracking applications
- Supports SMS connectivity
- Internal 650 mAh rechargeable battery (up to a two-month battery life)



Honeywell Total Connect™

TRACKING SERVICES

TCAT SPECIFICATIONS

Mechanical

- Dimensions – 2.4" x 1.8" x 0.7"
- Housing – ABS plastic; optional weather-proofing
- Weight – 4 oz.
- Status indicators – Network registration/GPS status

Cellular Specification

CDMA 1XRTT Characteristics

- Dual-band support
 - 800 MHz
 - 1900 MHz
- Protocol – Supports TCP and UDP
- PS (Packet Switched) data rate – CDMA PS data up to 153 kb/s DL/UL

GPS Specification

- Receiver – 50 channels
- Receiver Sensitivity – -161 dBm
- Accuracy – +/- 2.5m CEP
- Cold Start – <33 seconds
- Hot Start – <1 second

Physical Connection

- Eight pin microfit connector
- Four configurable I/O

Environment

- Operating temperature – -22°F to 167°F (-30°C to 75°C)

Power Requirement

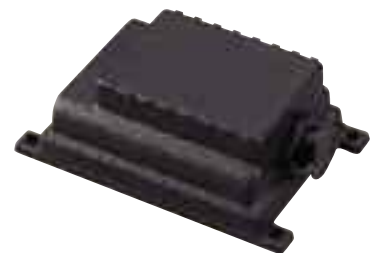
- Input power, current – 12-24VDC
- Current – Approx. 45mA active average; 150 µA sleep mode
- Battery – Internal 650, 960 or 6600 rechargeable Li-Ion

Certifications

- FCC
- Verizon Network

TCAT-EB

HONEYWELL TOTAL CONNECT™ ASSET TRACKER (EXTENDED BATTERY)



FEATURES

- Recommended for non-powered applications – designed for heavy machinery and equipment, freight containers and general valuables
- CDMA 1XRTT
- 1XRTT supports 800/1900 MHz dual band
- LED status indicators for GPS, network registration
- Over-the-air configuration and firmware upgrade
- Integrated GPS receiver and antenna for tracking applications
- Supports SMS connectivity
- Internal 6600 mA rechargeable battery for applications requiring longer battery life (may last up to two years, depending upon the activity use of the asset)

Honeywell Total Connect™

TRACKING SERVICES

TCAT-EB SPECIFICATIONS

Mechanical

- Dimensions – 4.4" x 2.7" x 1.6"
- Housing – ABS plastic with weather-proofing for outdoor use
- Weight – 8.5 oz.

Cellular Specification

CDMA 1XRTT Characteristics

- Dual-band support
 - 800 MHz
 - 1900 MHz
- Protocol – Supports TCP and UDP
- PS (Packet Switched) data rate – CDMA PS data up to 153 kb/s DL/UL

GPS Specification

- Receiver – 50 channels
- Receiver Sensitivity – -161 dBm
- Accuracy – +/- 2.5m CEP
- Cold Start – <33 seconds
- Hot Start – <1 second

Physical Connection

- Eight pin microfit connector
- Four configurable I/O

Environment

- Operating temperature – -22°F to 167°F (-30°C to 75°C)

Power Requirement

- Input power – 12-24VDC
- Current – 40 mA active average; 120 µA sleep mode
- Battery – Internal 6600 rechargeable Li-Ion

Certifications

- FCC
- Sprint Network (pending)
- Verizon Network (pending)

ACCESSORIES

VT-EXT Honeywell Total Connect Vehicle Tracker Extension Cable



ORDERING

TCVT2	Honeywell Total Connect Vehicle Tracker
TCAT	Honeywell Total Connect Asset Tracker
TCAT-EB	Honeywell Total Connect Asset Tracker (Extended Battery)
VT-EXT	Honeywell Total Connect Vehicle Tracker Extension Cable

For more information:

www.honeywell.com/security

Automation and Control Solutions

Honeywell Security Products Americas
2 Corporate Center Dr. Suite 100
P.O. Box 9040
Melville, NY 11747
1.800.467.5875
www.honeywell.com

Honeywell