



# IK-WF51A

## 5MP Indoor Panoramic Dome IP Camera

### Indoor Panoramic Views with IR LEDs

The Toshiba IK-WF51A is a 5MP panoramic dome IP camera with integrated IR LEDs. Surround viewing and up to 15fps in full resolution empower the IK-WF51A to cover large indoor areas with a single camera. IR LEDs and an aesthetically pleasing form factor make it suitable for retail, casinos and other indoor applications, while ONVIF compliance and PoE/PoE+ ensure compatibility with Toshiba and 3rd party systems.

- 5MP resolution
- Digital WDR and True Day/Night
- Full surround panoramic view
- Integrated IR LEDs
- Ceiling, wall & desktop mount
- Audio capabilities
- MicroSD card for edge recording
- ONVIF compliant for maximum compatibility
- PoE (802.3af) and PoE+ (802.3at)
- On board Dewarping



# IK-WF51A

5MP Indoor Panoramic IP Dome

**TOSHIBA**  
Leading Innovation >>>

## Camera

<b>Image sensor</b>	1/2.5 inch CMOS 5MP
<b>Effective pixels</b>	2560 x 1920 (4:3)
<b>Lens</b>	Fisheye f=1.5mm, F=2.8
<b>Lens type</b>	Fixed focal M12
<b>Angle of view</b>	175° horizontal 175° vertical
<b>Min. Illumination</b>	0.6 lux / F2.8 (50 IRE, Gain 100%, 1/30 sec), 0 lux w/IR on
<b>IR illuminators</b>	IR LED, 10m x 10m area at 3m range (see Diagram A)

## Camera Features

<b>Day/Night</b>	Yes, IR cut filter
<b>Wide Dynamic Range</b>	Digital WDR
<b>White balance</b>	Manual, AWB (2500K - 10000K)
<b>Gain (AGC)</b>	Auto
<b>BLC</b>	Yes
<b>Privacy mask</b>	Yes
<b>Motion detection</b>	Yes
<b>Tamper protection</b>	Yes

## Video

<b>Compression</b>	H.264, MPEG4, MJPEG
<b>Resolutions</b>	1920x1920, 1536x1536, 1280x1280, 1056x1056, 768x768, 512x512, 384x384, 256x256, 192x192
<b>Video streams</b>	3 streams
<b>Frame rate (max) <sup>1</sup></b>	15 fps @5MP 25 fps @1080p (MPEG4) 30 fps @1080p (H.264, MJPEG)
<b>Dewarp</b>	Local camera and software dewarping

## Audio

<b>Audio Compression</b>	G.726, G711
<b>Audio In/Out <sup>2</sup></b>	Built in MIC, MIC In (plug-in power 3.3V, 200kΩ), Line OUT (1 Vrms)

## Interface

<b>Ethernet connectors</b>	10 Base-T/100 Base-TX, RJ45 connector
<b>Digital In/Out</b>	1 in/1 out
<b>SD card slot</b>	MicroSD/SDHC/SDXC 64GB max

<sup>1</sup>: Varies in accordance with the object, image quality, network environment and performance of the personal computer used.

<sup>2</sup>: The sound may not be clear depending on the conditions of the lines.

## Network

<b>Protocols</b>	IPv4, IPv6, TCP/IP, HTTP, HTTPS, UPnP, RTSP/RTP/RTCP, IGMP, SMTP, FTP, DHCP, NTP, DNS, DDNS, PPPoE, CoS, QoS, SNMP, and 802.1X
<b>ONVIF</b>	Profile-S (test tool v14.12)
<b>Maximum user access</b>	10 clients
<b>Security</b>	Multi level ID/Password, IP address filtering, HTTPS, 802.1x port- based authentication
<b>Basic Authorization</b>	Yes (Windows standard)
<b>Bandwidth control</b>	QoS, CoS
<b>Camera set-up program</b>	Installation Wizard
<b>Plug-In</b>	Active X
<b>Alarm recording</b>	FTP, email, MicroSD card, HTTP

## General

<b>Dimensions</b>	1.5 inch (H) x 6.3 inch (Diameter) (39mm x 160mm)
<b>Weight</b>	1.3 lbs (589g)
<b>Power requirements</b>	802.3af PoE, 802.3at PoE+, 12V DC ± 10 %
<b>Power consumption</b>	22W
<b>Operation temperature</b>	14°F to 122°F (-10°C to 50°C)
<b>Operation humidity</b>	~ 90%
<b>Approvals</b>	FCC/B (verification), IC(ICES-003), UL(60950), cUL
<b>Warranty</b>	2 years

## System Requirements

<b>Web browser support</b>	Internet Explorer® Ver. 8.0 or later
<b>Supported OS</b>	Windows® XP, Vista® Business, Windows 7 professional

## Accessories

<b>Included</b>	Quick start guide, CD-ROM, alignment sticker, screw and anchor kit, cable tie
-----------------	---

Diagram A



©2015 Toshiba America Information Systems, Inc. All rights reserved. All products and names mentioned are the property of their respective owners. While Toshiba has made every effort at the time of publication to ensure the accuracy of the information provided herein, product specifications, configurations, prices, system/component/options availability are all subject to change without notice.

Toshiba America Information Systems, Inc.  
Surveillance & IP Video Products, Imaging Systems Division  
9740 Irvine Boulevard, Irvine, California 92618  
1-877-855-1349 • [www.toshibasecurity.com](http://www.toshibasecurity.com)

# IK-WF51A

5MP Indoor Panoramic IP Dome

**TOSHIBA**  
Leading Innovation >>>

## Camera Modes

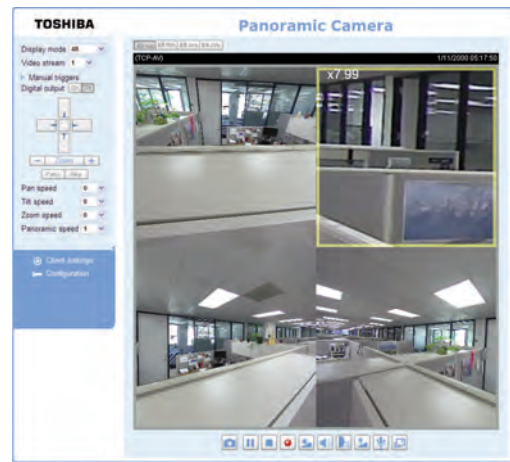
The IK-WF51A panoramic camera can display full surround video in multiple modes such as: original surround, full panoramic, 4 regions of interest, or combinations of original surrounds or panoramic plus regions of interest. With electronic PTZ controls, the panoramic camera can cover a large surveillance area with a single device.



Original surround



Four Regions of Interest  
(no GUI)



Four Regions of Interest  
(with GUI)



Panoramic  
(no GUI)



Panoramic  
(with GUI)

# IK-WF51A







5MP Indoor Panoramic IP Dome



## Included Accessories

- Quick start guide
- Screw and anchor kit
- CD-ROM
- Cable tie
- Alignment sticker

## Optional Accessories

Accessory Type	Part Number	Description	Photo
Corner Mount	JK-CMA12	Corner mount adapter. Requires use with JK-PHO14 and JK-WM12	
Pendant Mount	JK-PHO14	Pendant mount adapter	
Pole Mount	JK-PMA12	Pole mount adapter. Requires use with JK-PHO14 and JK-WM12	
Pendant Head	JK-PMH12	Pendant head adapter. Requires use with JK-PHO14	
Pendant Pipe	JK-PMP12	Pendant pipe. Requires use with JK-PMH12	
Wall Mount	JK-WM12	Wall mount. Requires use with JK-PHO14	
Adapter Plate	JK-JBA3	Adapter plate for mounting to 4-11/16" junction box	